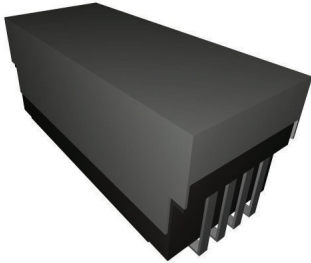


**New**

# 190D Series

**High Power  
Surface Mount**

## PRODUCT DESCRIPTIONS

The 190D series relay has been developed to meet the high density trend of small packages, with higher voltages and higher current capabilities that are required for surface mount relays.

- Contact Rating 50W
- Switching Capability 350V
- Carry Current 2.8A
- Brakedown Voltage 400V
- Ultra Reliability  $10^9$

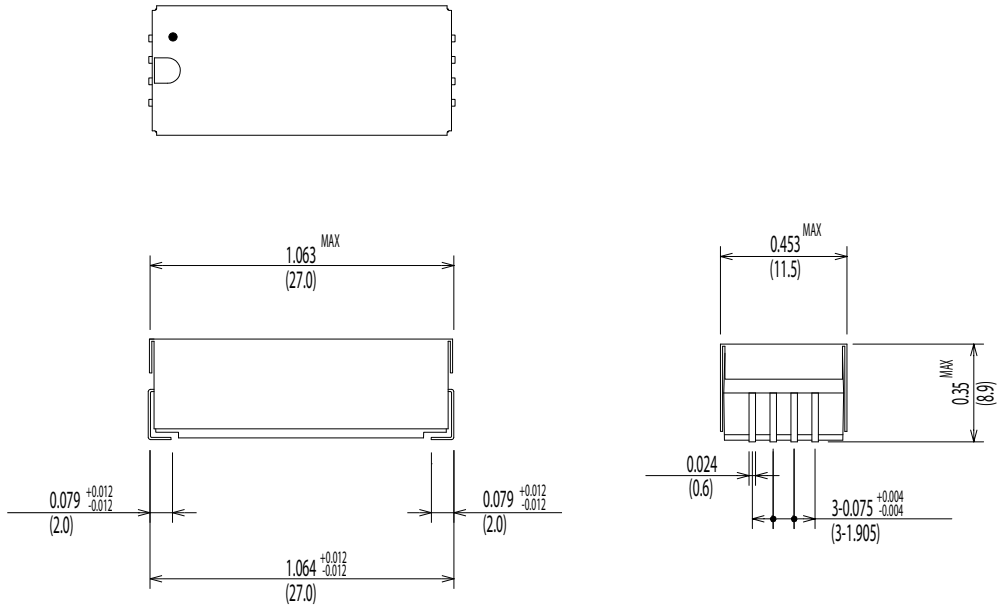
## SPECIFICATIONS



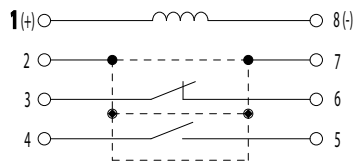
<b>190D Series</b>		<b>190D-1T12J</b>	
Parameters	Units	1 Form A + 1 Form B	Test Conditions
<b>Coil Specifications</b>			
Nominal Coil Voltage	VDC	5.0	±10% @ 20°C @20°C @20°C
Coil Resistance	Ω	150	
Operate Voltage	VDC Max	3.75	
Release Voltage	VDC Min	0.7	
<b>Contact Ratings</b>			
Switching Voltage	Volts	350	Max DC/Peak AC resistance Max DC/Peak AC resistance Max DC/Peak AC resist(@30°C) Max DC/Peak AC resist @ 1V 10mA Max initial @ operate voltage Max initial @ operate voltage
Switching Current	Amps	0.5	
Carry Current	Amps	2.8	
Contact Rating	Watts	50	
Life Expectancy	x10 <sup>6</sup> Cycle	1000	
Contact Resistance	mΩ	150	
Contact Resistance Stability	mΩ	5.0	
<b>Relay Specifications</b>			
Insulation Resistance	Ω Min	10 <sup>11</sup>	Between all isolated pins @ 100V 20°C 65%RH
Dielectric Strength(Static)	VDC Min	400	Between contacts
	VDC Min	500	Contacts to shield
	VDC Min	500	Contacts/Shield to coil
Operate Time (Including Bounce)	msec Max	1.5	@nominal coil voltage 100 Hz square wave
Release Time	msec Max	1.5	Diode suppression
<b>Measurement Reference Conditions</b>		<b>Environmental Ratings</b>	
Temp: 15°C to 35°C Humidity: 25% to 75%RH Atmospheric Pressure: 860 to 1060hpa		Storage temp: -40°C to +85°C Operate temp: -20°C to +60°C Vibration: 20G's to 2000Hz Shock: 50G's Processing temp: 260°C max for 60sec. dwell time	

**Dimensions All Dimensions are inches (mm)**

**190D-1T12J**



**Schematic <Top View>**



**Land Pattern Recommendation**

